

HIROSHIMA YAMAGUCHI experience by bullet train(shinkansen)





White snake hall



Kintaikyo



Shin iwakuni

Atomic bomb dome



Peace park



Fukuyama castle



Fukuyama

Hiroshima

Itsukushima shrine

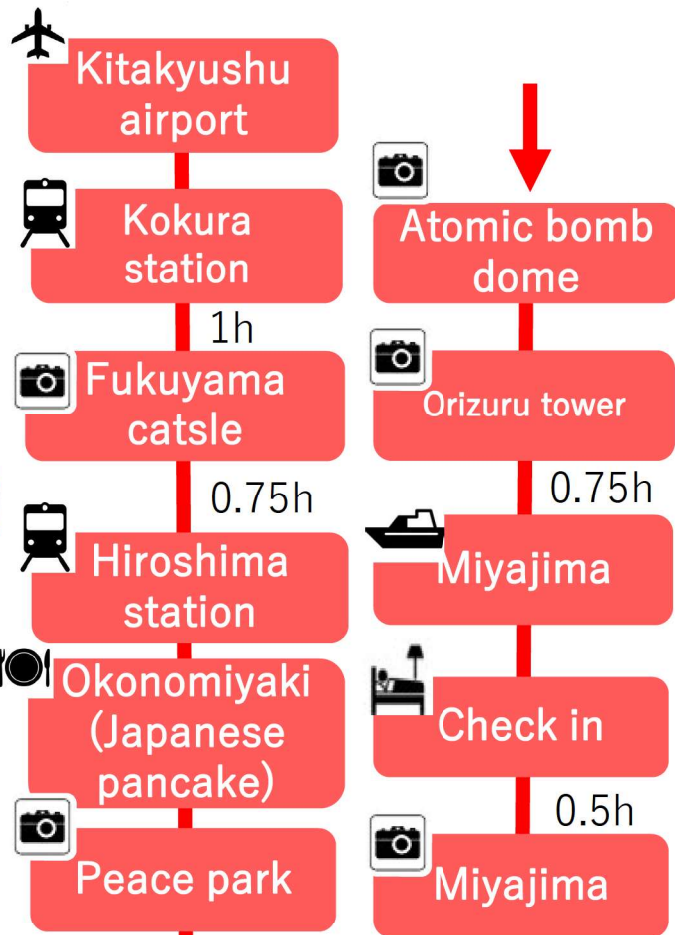


Japanese culture experience



YAMAGUCHI
• HIROSHIMA
Round MAP

Day 1



Day 2



Day 1 ! Heading to Hiroshima and Fukuyama from
Kokura ! ! !

The closest castle from the station

Fukuyama
castle



Entrance fee
adult : 2 0 0 yen under 18 : free



400th anniversary at 2022.
Very historic place!

Taking tram, taste delicious lunch at Hiroshima, and going to peace park ! !

Okonomiyaki in Hiroshima is mixed with soba noodles. Very voluminous.



Peace park is located near ground zero of atomic bombing in 1945. Many people are visiting there to pray for peace.🚌

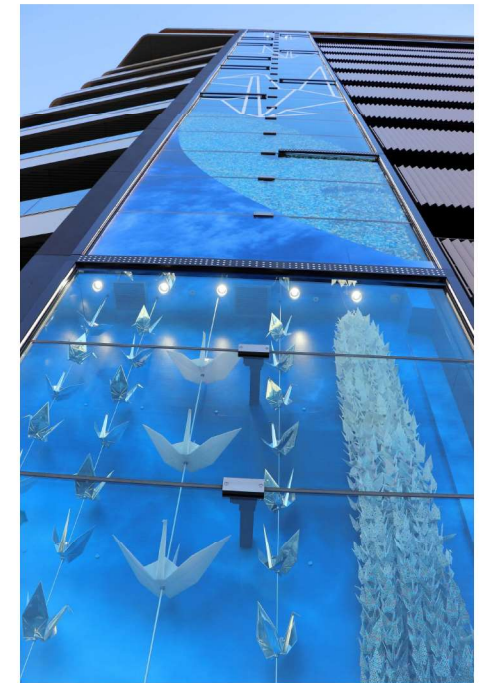


New Hiroshima landmark is opened in 2016



You can view peace park and atomic bomb dome from orizuru tower.

Variety of souvenirs from Hiroshima is sold at first floor of the tower. ♪



World heritage in Hiroshima, Heading to Miyajima, the place of Itsukushima shrine !



Itsukushima shrine is lighted up from 30 minutes after sunset to 11 p.m. Enjoy the different apomorphia in the daytime and nighttime.



Day 2 ! ! Strolling Miyajima in early morning when the street is not messed !



You can enjoy strolling Miyajima whole day. Also there is a café opened in early morning.



Houkoku shrine Fee
adult : 1 0 0 yen child : 5 0 yen



Day 2 ! ! Strolling Miyajima in early morning when the street is not messed !

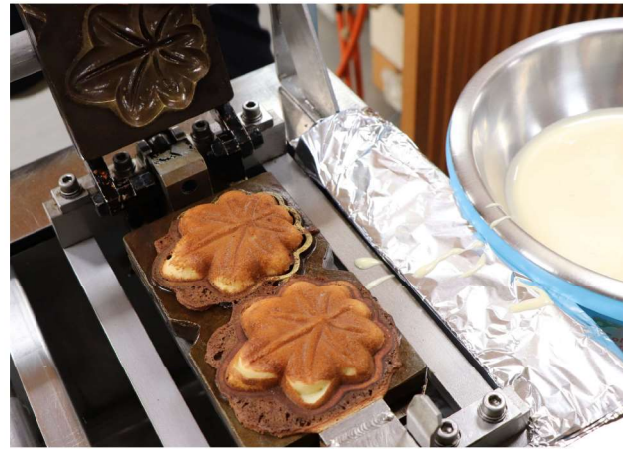


Houkoku shrine
Fee
adult : 1 0 0 yen
child : 5 0 yen



You can enjoy strolling Miyajima wholeday. Also there is a café opened in early morning.

Heian aristocracy experience and Baking Momiji manju experience ! !



You can enjoy experience not only for women but also for men and kids closes ♪ ♪



You can bake famous Momijimanjyu !
Incredible taste of fresh manjyu©



Kintaikyo, the best 3 bridges in Japan, at Iwakuni !



It has beautiful arch and very symbolic wooden bridge !!
You may enjoy Cherry blossoms in spring, autumn leaves in autumn at Kikko park and around the bridge.



Fee (round)
adult : 3 0 0 yen
Child(6~12) : 1 5 0 yen



Meeting a precious natural treasure in a castle town of Iwakuni !

You can see white snakes which is known as servant of god !
You may get many benefit from them☆



Iwakuni sushi is famous in the area !
“Ohira” Yamaguchi’s regional food

